

TO USE THIS QUICK START GUIDE

Unfold this poster completely to view the Quick Start Setup Instructions. For more information, consult the enclosed manual or contact Lightspeed Technical Services at 800.732.8999.

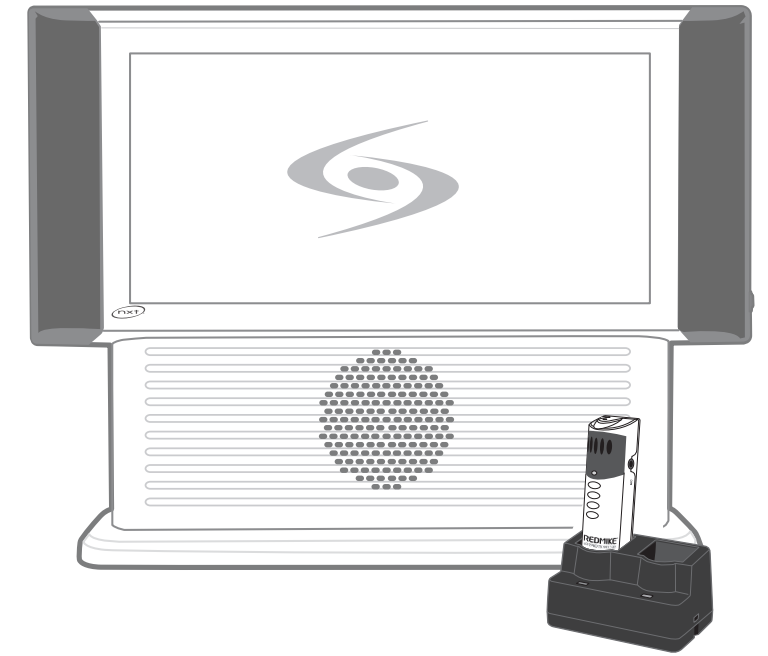
The main part of the fold-out poster gives basic instructions to quickly setup the REDCAT Media and standard REDMIKE microphones. For quick-start instructions on optional microphones see the adjacent panels of this quick-start guide.



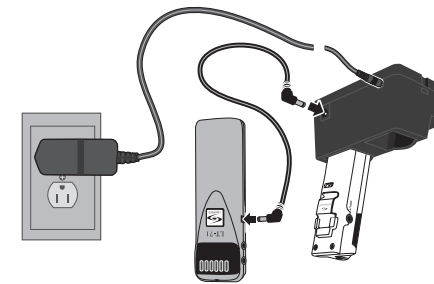
**LIGHTSPEED TECHNOLOGIES**

11509 SW HERMAN RD / TUALATIN, OR 97062  
 TOLL FREE: 800.732.8999 / PHONE: 503.684.5538 / FAX: 503.684.3197  
 LIGHTSPEED-TEK.COM

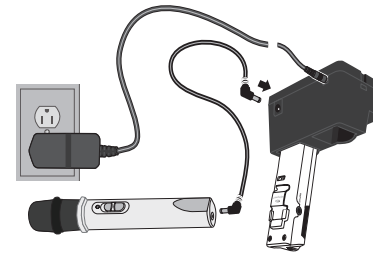
SU0245US01-1



Quick Start Setup Poster



1. Ensure microphones are turned off.
2. Make sure the cradle charger is plugged into a wall outlet.
3. Connect one end of the charging cable into the jack labeled CHARGER on the side of the microphone.
4. Plug the other end of the cable into the jack labeled CHARGE OUT on the rear of the REDMIKE cradle charger.



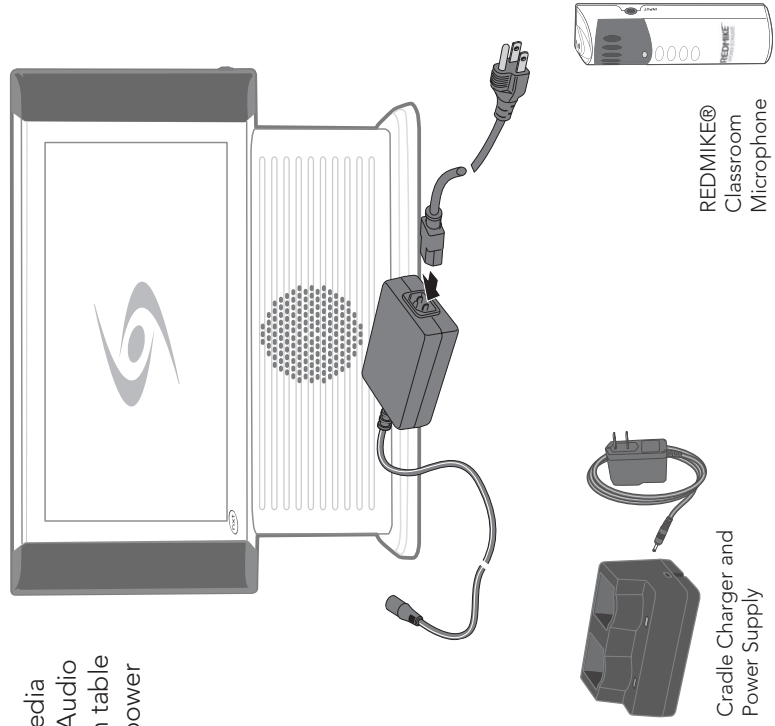
Charge the REDMIKE Share and the LT-71 LightMic using the charge jack on the back of the REDMIKE charging cradle. A charging cable is provided.

CHARGING THE REDMIKE SHARE AND LT-71 MICROPHONES

## SYSTEM COMPONENTS AND UNPACKING

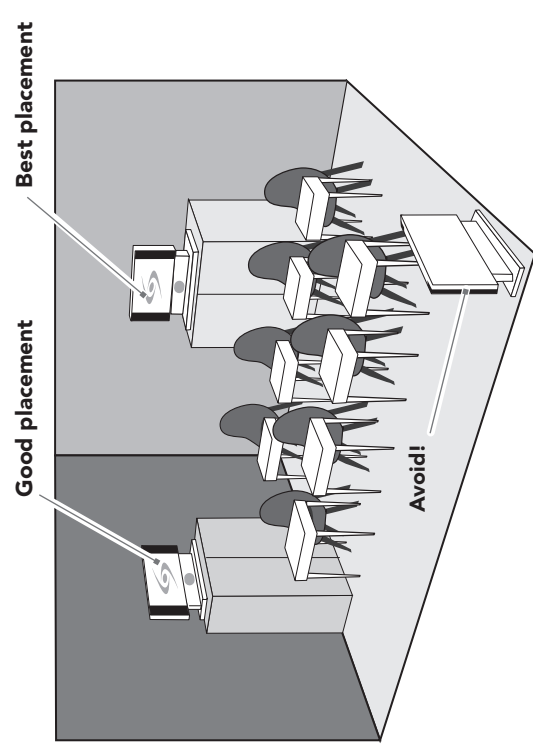
The standard configuration of the REDCAT® Media will contain:

REDCAT Media Classroom Audio System with table stand and power supply



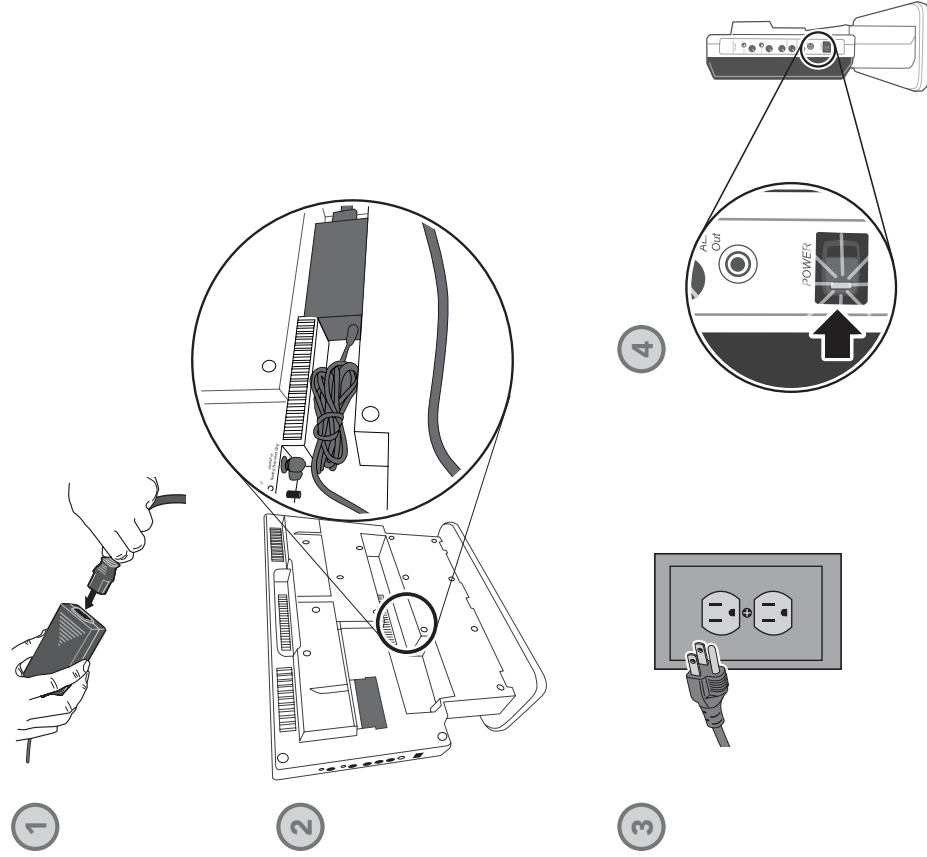
## 1. PLACE THE REDCAT MEDIA

- Place within 7 feet of electrical outlet and about 3-6 feet off the ground.
- Locate along the wall in the back or side of the classroom. Avoid locations on the floor or very near where the teacher is speaking.



NOTE: To mount on wall, see REDCAT Media user manual.

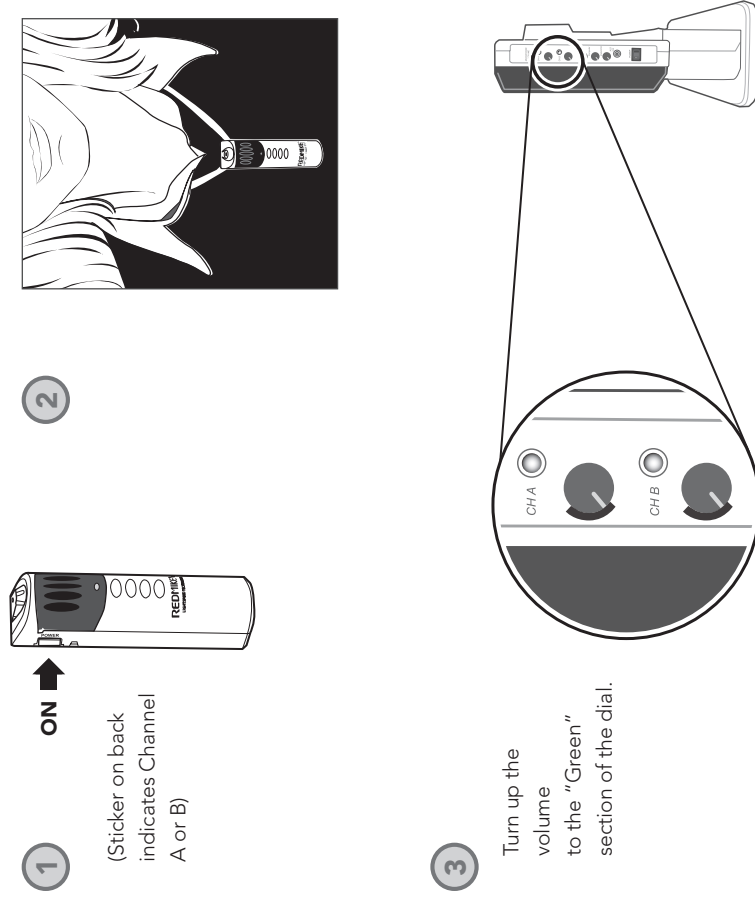
## 2. PLUG IT IN AND TURN IT ON



## 3. CHARGE THE REDMIKE

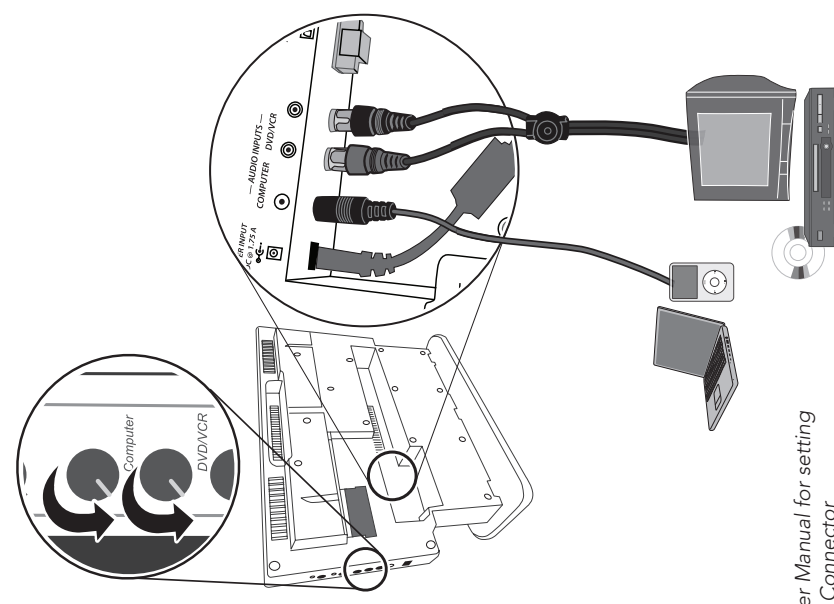
1. Remove the battery from the REDMIKE. The yellow tab on the battery indicates the 'OFF' position.
  2. Connect the REDMIKE to the Cradle Charger and Power Supply. The power supply is plugged into a wall outlet.
  3. The REDMIKE is shown in the cradle, connected to the power supply. The power supply is plugged into a wall outlet.
- Fully charged microphone lasts over 7 hours
  - Red light on charger indicates charging
  - Green light indicates full charge
  - Blinking light indicates charging error
  - Lightspeed batteries are needed for proper charging. See user manual for more information.

## 4. TURN ON AND POSITION REDMIKE



## 5. ADD MULTIMEDIA TO THE REDCAT

1. Turn volume all the way down on REDCAT Media.
2. Connect external audio device via patch cord (not included).
3. Turn devices on and adjust volume on REDCAT Media for corresponding external device (see external labels).



NOTE: See iRMC User Manual for setting up optional iR Media Connector